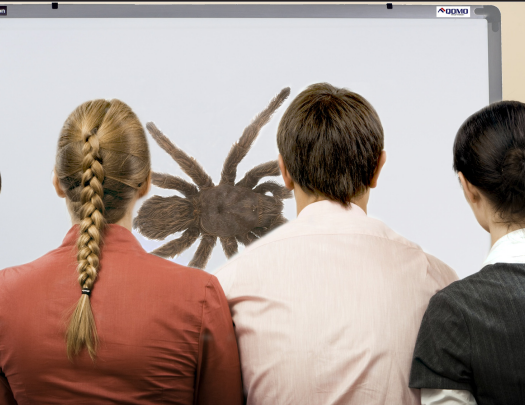


QOMO Interactive Whiteboard

Electromagnetic



Electromagnetic Interactive Whiteboard Specifications

Model	QWB200EM	QWB300EM
Technology	Electromagnetic Technology	Electromagnetic Technology
Writing Stylus	Wireless Electromagnetic Pen	Wireless Electromagnetic Pen
Active Writing Area	58" x 44"	66" x 46"
Resolution	8192 x 8192	8192 x 8192
Response Speed	< 5ms	< 5ms
Cursor Speed	300 dot/second	300 dot/second
Writing Accuracy	.04"	.04"
Power Consumption	< 5W	< 5W
Power Supply	From USB port	From USB port
Port	USB	USB
Active Writing Area	74"	84"
Unit Dimensions	78" diagonal 64"x48"x1"	88" diagonal 72"x50"x1"
Net Weight	35 lbs	44 lbs
Operating System	Windows 98/2000/XP/Vista	Windows 98/2000/XP/Vista
Accessories	Wireless electromagnetic pen, stand(optional), USB cable	Wireless electromagnetic pen, stand(optional), USB cable

Working Environment:

Working Temperature: -4-131 °F

Working Humidity: 20-90%

Storage Temperature: -49-140 °F

Storage Humidity: 10-95%



QOMO HiteVision
Toll Free: (866) 990-QOMO
Email: info@qomo.com



Electromagnetic Interactive Whiteboard

QOMO Electromagnetic Board Features:

- ✓ Flow! Works Whiteboarding software lets you save all of your work.
- ✓ Multimedia Pen is used to operate the board using only one AAA battery and can produce left and right mouse button clicks.
- ✓ Digital electromagnetic technology allows for precise and accurate mouse clicks and pen strokes.
- ✓ Durable surface is built to withstand wear and tear exceptionally well.
- ✓ Superb projection surface that gives an optimal view from various angles and reduces glare.
- ✓ Packaged with wall mounting brackets and optional mobile stand for installation.
- ✓ USB cable included- no external power supply necessary!



RM Easiteach
Interactive Whiteboard and State Software for Teachers®

**Interactive Curriculum
Software Included!**

QOMO
HiteVision